

MAC III Profile™



Martin®

A Higher Level of Performance

Truly milestone moving heads come around only seldom. That time is now.

Martin Professional marks the launch of the third generation of award-winning MAC moving heads with the MAC III Profile™. Built from the ground up and packed with new patent pending technology, the high-output, 1500 watt MAC III Profile is based on a new platform that takes moving head performance to a higher level.

Now that's bright!

- 33,000 lumens of power cuts through everything - even at wide zoom angles and using multiple effects

Fat looks...like no other

- eye-catching front lens and fat beam like no other, and with so many effects choices designers won't know where to start

Color beyond compare

- enhanced color mixing system (rich red!) and our smoothest dimming system yet

Speed that thrills

- 1:5 linked zoom and focus with breathtaking speed, quick color and gobo shifts, and fast pan/tilt acceleration make the MAC III Profile fast in every way - all while staying surprisingly quiet

At your service

- self-contained modules make the MAC III Profile exceptionally easy to service and a joy to use. Control is intuitive and prepared for future protocols

Solid investment

- rugged construction and a meticulous attention to detail ensure flawless performance from show to show



Now That's Bright!

We've designed the MAC III Profile to offer the best optical performance together with the highest level of optical efficiency in its class.

Up to 75% brighter than current 1200 watt fixtures, the MAC III Profile kicks out over 33,000 lumens from the included 1500 watt Lok-it!™ single-ended lamp. A remarkably high output is maintained even at wide zoom angles and with multiple effects in the optical train.

A reduced lamp power mode saves power, extends lamp life and balances output with smaller fixtures.

The MAC III Profile's electronic ballast provides for flicker-free projection, making them ideal for television and film work.

Quiet and clean cooling

We have achieved a very quiet cooling system through a clever ducting system that sends air directly to the components that need it. In this way we have eliminated excessive air flow known from traditional cooling systems that provide no cooling but only bring more dirt into the fixture. As a result, the MAC III Profile stays quiet, cool and clean.



“This light cuts through ANYTHING and the color mixing is nice across the entire spectrum. For a light of its size, it really moves and the speed of the zoom is awesome. I loved the 2K series before, but Martin has hit it out of the park with the MAC III!”

– LD Michael Cooper

**“So You Think You Can Dance”
Lighting Designer: HenkJan van Beek
Photo courtesy of Chain**

Fat Looks... Like No Other

Eye-catching broad lens

A broad front lens gives a unique fat beam that brings a whole new look to shows. Visually brilliant mid-air and stunning on camera, the broad beam look is much sought after by designers and artists alike.

Superb depth of field

Enhanced depth of field, especially at wider beam angles, gives a crisper beam and sharper projection images at various projection angles.

New gobo wheel design

Two gobo wheels, each with 5 indexable rotating gobos (plus open), house both classic and new designs. Gobos are easily interchangeable and are 'keyed' to allow gobo changes while keeping their indexed position.

Gobo morphing

The combination of two rotating gobo wheels with high optical separation allows for stunning morphing effects - one gobo in full-focus, the other out of focus.

Animation

For the finest in animation projection, we have included our pioneer gobo animation system for continuous effect simulations, such as rising flames, drifting clouds, driving rain, turbulent water and much more.

Constructed of glass to allow for more complex designs, the unique drive system allows for full movement and direction control. It can be inserted very quickly and without it spinning.

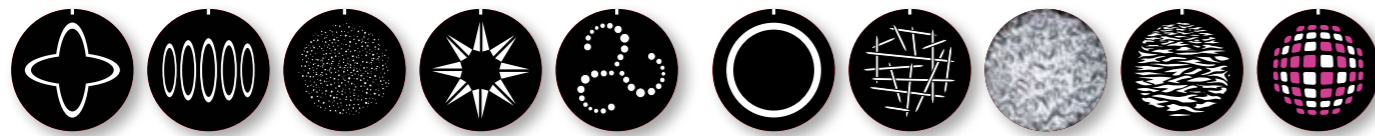
The list of visual possibilities is multiplied with a host of features that adds unique effects to beam projection.

Four-facet prism

The four-facet prism - indexable and easily interchangeable - rotates at variable speeds, adding distinctive effects to gobo projection.

Smoother beam edge

A motorized iris with added blades maintains an exceptionally smooth beam edge.



GOBO WHEEL 1

GOBO WHEEL 2



7 COLORS



ANIMATION WHEEL



Color Beyond Compare

Enhanced CMY color technology and chromaticity tuning make a wide array of color shades possible from subtle light pastels to deep saturated colors. Evenly mixed across the beam, the broad color palette can be fine tuned with a color temperature correction system (CTO) that matches tungsten well.

A seven-slot (plus open) color wheel lets you choose from carefully-selected colors or customize with your own. All colors are easily interchangeable dichroic filters with non-fade coating. Color bumps and fast color splits are exceptional.



Best dimming system yet

The MAC III Profile produces uniform and seamless dimming - our best dimming system yet. Intensity changes - slow or fast - are exceptionally smooth.

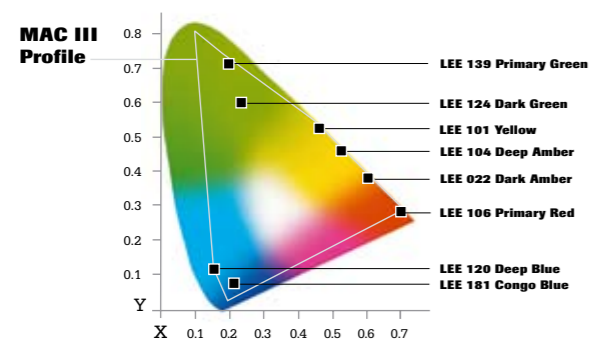
Fast, punchy, yet smooth

The separate shutter allows for a complete blackout and adds a robust punch to fast strobe effects (2 - 10 Hz). The fixture can also strobe electronically, either on its own or in combination with the separate shutter.

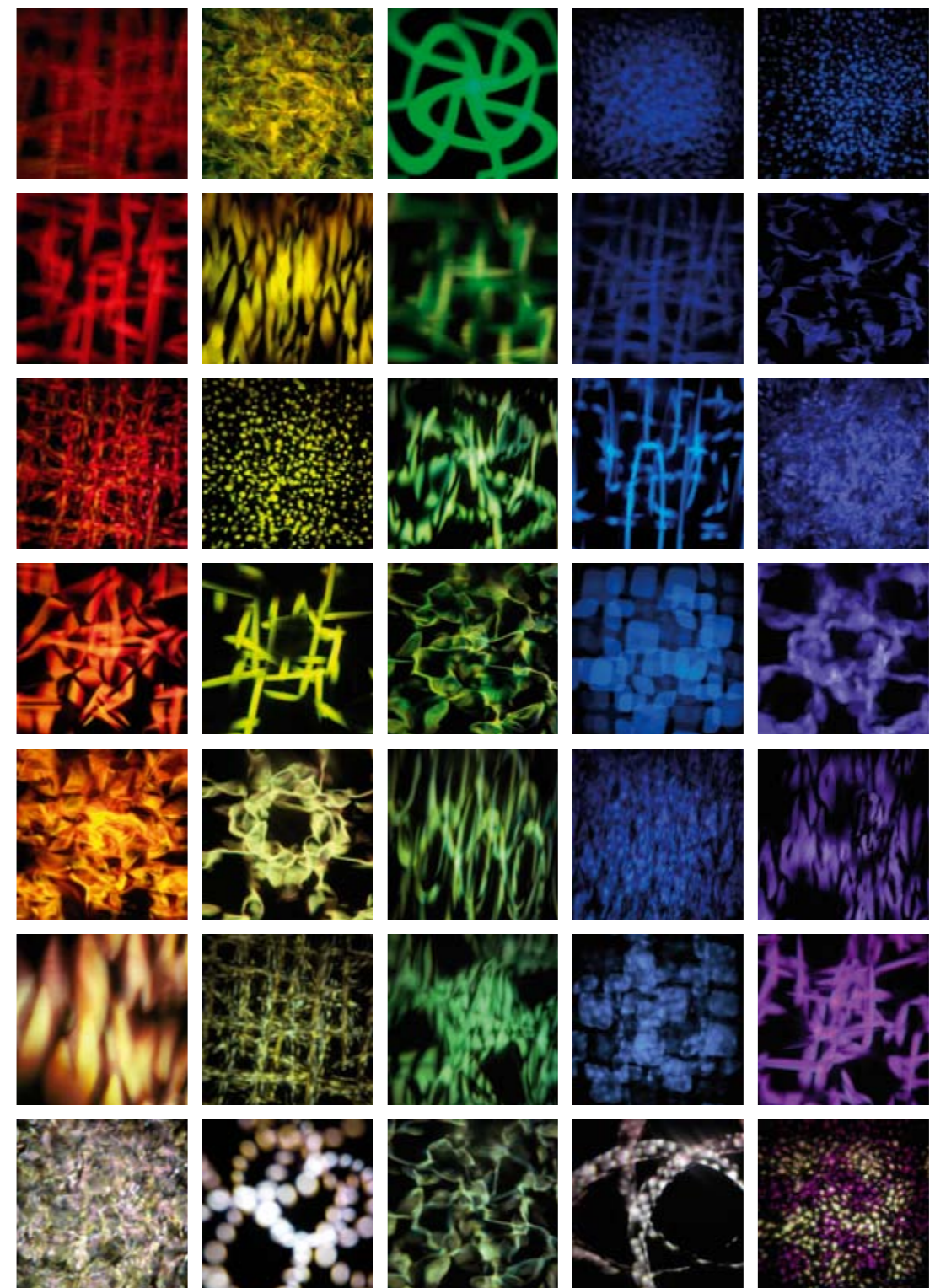


The temperature of light

Variable CTO allows for gradual and smooth shifts in color temperature in order to achieve warmer or more saturated shades of color. It is also useful when matching color temperature with tungsten fixtures, extremely beneficial in television and theatre applications.



Chromaticity diagram colors plotted are with a tungsten source



The full spectrum (and real red, too!)

The MAC III Profile's CMY color mixing system mixes colors instantly and accurately and offers a wider range of vibrant colors across the spectrum - including an extremely rich red - for brilliant static images, dramatic effects, animations, and textured backgrounds. The color wheel complements the CMY system and allows for complete color customization.

Speed that Thrills

Absolute pan/tilt positioning

With a new absolute pan/tilt positioning system the fixture's head finds its correct position immediately without the need for a pan/tilt reset at start-up or if head movement is disturbed. It is also possible to set minimum and maximum pan and tilt angles, allowing fixtures to be installed closer

together with no risk of head collision. Besides saving time and ensuring consistent positioning accuracy, the new system lets you pack more light into the rig.



Linked zoom/focus

For easy adjustment of beam size as well as beam angle, an incredibly fast linked zoom and focus zooms from a narrow 11.5° out to 55° in just a second. Each gobo wheel effect can be in sharp focus through the entire zoom range.



Speedy movement

High-speed 540° pan and 268° tilt movement, with fast acceleration for a fixture in this class, is provided by a new powerful motor that has four times the torque of the motors used in the MAC 2000 Profile. The MAC III Profile is faster than many smaller and lighter fixtures, all while staying surprisingly quiet.



At Your Service

The MAC III Profile is designed to reduce service time and eliminate hassles. The fixture is well thought through in terms of reducing down time and replacement components, helping minimize service and lower costs.

Self-contained modules (it is surprisingly easy to take apart) allow for fast access to critical components. This reduces maintenance periods, saving time and money, and ensures an easy conversion to future versions of the fixture.

The base is smaller than you'd expect and has a unique pull-out 'drawer' that contains a complete power unit for lamp and all electronics. This makes access convenient for maintenance and cleaning – even in the rig.



Included is a USB host socket that can be used to download the event log, upload firmware, and add prospective features.



Innovative handles on the yoke ease carrying and installation.



Handy alignment points and "fast-fit" system make lamp replacement and adjustment easier than ever.



A unique LCD screen Graphical User Interface with jog wheel makes the MAC III Profile quick to program and troubleshoot - and easy to use. The LCD screen is battery-powered so that fixture status can be read while still in the flightcase.

Event log

During a show, the MAC III Profile will automatically log events. This unique event logging system lets users review fixture performance immediately or at a later stage, for example when the fixture is in the flightcase. A scroll-and-click jog wheel includes a status LED that shows if errors are present, even when the unit is disconnected from power.

Intuitive use and control

The MAC III Profile is DMX 512 A controllable, RDM ready and prepared for Art-Net II and ACN.



Solid Investment

The MAC III Profile is built tough for the rugged touring life. A strong aluminum frame work, die-cast magnesium shells and composite materials ensure an unsurpassed build quality with second-to-none durability.

A new and attractive design combines with innovative technologies to make the MAC III Profile the perfect balance of design and performance.

Backed by highly skilled engineers who have been producing award-winning MAC luminaires for over two decades, not to mention the industry's most complete and comprehensive service network, the MAC III Profile will ensure a healthy return on investment.

Many of the design innovations included in the MAC III Profile are patents pending.

The MAC III Profile is covered by one or more of these patents:

DE 60,009,334; EP 1,234,197; US 6,241,366; US 6,687,063; US 6,601,973; US 6,971,770; US 7,222,997;

and/or one or more of these patent applications:

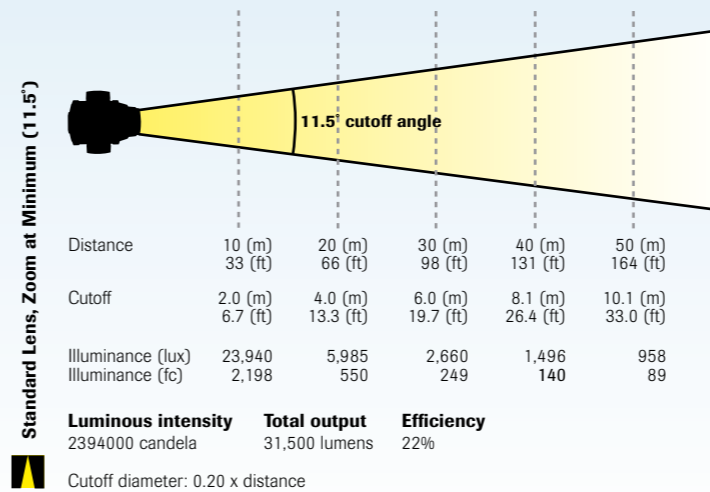
CN 1985125A; CN 200810128720.0; CN 200810128782.1; CN 200810128771.3; CN 200810128776.6; CN 200810131481.4; CN 200810125884.8; CN 200810125883.3; EP 1,747,399A1; EP 081036675; EP 08103669.1; EP 08103671.7; EP 08103673.3; EP 08103672.5; EP 08103784.8; EP 08103674.1; EP 08158378.3; EP 08104332.5; US 2008/0089066; US 2007/0145937; US 12/058,138; US 12/107,821; US 12/107,827; US 12/107,826; US 12/107,833; US 12/107,837; US 12/112,078; US 12/136,365; US 12/140,494

and/or one or more other intellectual property rights, including one or more intellectual property rights listed on www.martin.com/ipr

Photometrics

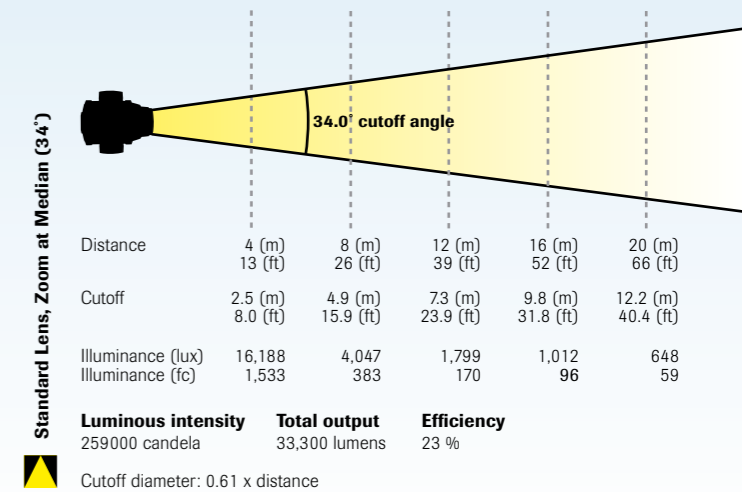
Narrow

Light source: **Osram HTI 1500W/60/P50 Lok-it!**
 Rated wattage: 1500 W
 Rated life: 750 hours
 Rated color temp.: 6000 K
 Rated output: 145000 lumens



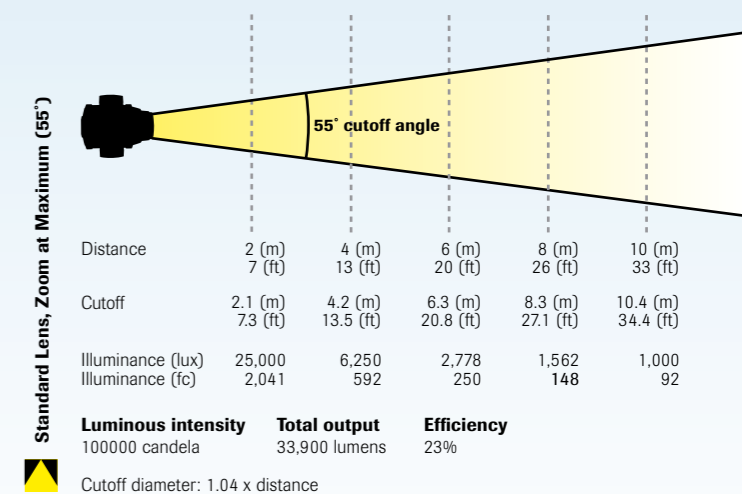
Medium

Light source: **Osram HTI 1500W/60/P50 Lok-it!**
 Rated wattage: 1500 W
 Rated life: 750 hours
 Rated color temp.: 6000 K
 Rated output: 145000 lumens



Wide

Light source: **Osram HTI 1500W/60/P50 Lok-it!**
 Rated wattage: 1500 W
 Rated life: 750 hours
 Rated color temp.: 6000 K
 Rated output: 145000 lumens



“The MAC III offers a significantly brighter tier of lighting, a great wide aperture source, a dramatic zoom, real strobing ...and finally a real red!”

– LD Paul Normandale

Specifications

PHYSICAL

Length:	712 mm (28.0 in.)
Width:	536 mm (21.1 in.)
Height:	936 mm (36.9 in.)
Weight:	53.5 kg (117.7 lbs.)

LAMP

Type:	1500 W short-arc discharge
Fitted as standard:	Osram HTI 1500W/60/P50
Color temperature:	6000 K
CRI (Color Rendering Index):	>85
Average lifetime:	750 hours
Hot restrike:	Fast restrike (restrike in under 2 minutes)
Ballast:	Electronic

DYNAMIC EFFECTS

Color mixing:	CMY, independently variable 0 - 100%
Color temperature control:	CTO, variable 0 - 100%
Color wheel:	7 interchangeable dichroic filters + open, indexing, continuous rotation, random color
Rotating gobo wheel:	Two rotating gobo wheels, each with 5 interchangeable rotating gobos + open, indexing, continuous gobo rotation, gobo rotation shake
Gobo animation:	Interchangeable animation wheel, split color, continuous rotation with variable angle, speed and direction
Prism:	Interchangeable 4-facet rotating prism
Iris:	0 - 100%, pulse effects
Mechanical dimmer:	0 - 100%, choice of four dimming curves
Mechanical shutter:	Strobe effect 2 - 10 Hz, pulse effects, instant open and blackout
Focus:	2 m (6.6 ft.) to infinity
Zoom:	11.5°-55° (linked to focus)
Pan/tilt:	540°/ 268°
Position correction system:	Absolute position monitoring

CONTROL AND PROGRAMMING

DMX channels:	27/30
Setting and addressing:	Control panel with backlit graphic display
16-bit control:	Dimmer, gobo indexing (gobo wheels 1 & 2), focus, zoom, pan & tilt
Movement control options:	Tracking and vector
Protocol:	USITT DMX512-A and RDM
Receiver:	Opto-isolated RS-485
Firmware update:	USB memory device & remote upload

CONSTRUCTION

Color(s):	Black
Housing:	Magnesium alloy, UV-resistant fiber-reinforced composite
Reflector:	Glass, cold light
Protection rating:	IP20

INSTALLATION

Mounting points:	2 pairs of 1/4-turn locks
Orientation:	Any

CONNECTIONS

AC power input:	Neutrik PowerCon connector with 3 m (9.8 ft.) cable tail
DMX and RDM data in/out:	5-pin locking XLR
Ethernet (Artnet II compatible, ACN-ready):	Neutrik RJ-45 socket (accepts Neutrik EtherCon connectors in housing)
USB memory devices:	USB host socket
Future USB options:	USB device socket

ELECTRICAL

AC power:	200-240 V nominal, 50/60 Hz
Power supply unit:	Auto-ranging electronic switch-mode

THERMAL

Cooling:	Filtered forced air (temperature-regulated, low noise)
Maximum ambient temperature (Ta max.):	40° C (104° F)

APPROVALS

EU safety:	EN 60598-1, EN 60598-2-17
EU EMC:	EN 55 015, EN 55 103-1, EN 61 547
US safety:	ANSI/UL 1573
Canadian safety:	CSA C22.2 No. 166

INCLUDED ITEMS

Two Omega clamp attachment brackets with 1/4-turn fasteners:	P/N 91602001
3 m power cable:	P/N 11541503

ACCESSORIES

G-clamp:	P/N 91602003
Safety wire, 70 kg SWL:	P/N 91604004
Quick trigger clamp:	P/N 91602007
T-shaped omega bracket with quarter-turn fasteners:	P/N 91602008
Swing-wing mounting plate :	P/N 91602010

ORDERING INFORMATION

MAC III Profile in cardboard box:	P/N 90206000
MAC III Profile in single flightcase:	P/N 90206001

Martin Professional A/S

Olof Palmes Allé 18 | 8200 Aarhus N | Denmark | Phone: +45 87 40 00 00 | Fax: +45 87 40 00 10 | www.martin.com

Founded in 1986 and headquartered in Aarhus, Denmark, Martin Professional is a world leader in the creation of dynamic lighting solutions for the entertainment, architectural, and commercial sectors. Martin lighting solutions are industry standard on top tours and events, grace prestigious theatres, energize nightclubs, and decorate major television studios around the globe. The company operates the industry's most complete and capable distributor network with local partners in nearly 100 countries. For more information please visit www.martin.com



Printed on Arctic Silk paper using recycled post-consumer waste and virgin fibers. Independently Forest Stewardship Council certified (www.fsc.org). Printed by Delta Grafisk, Aarhus, Denmark - a licensee of the Swanemærke (Swan Label), an official Nordic label for environmentally friendly production.

