

WILDBEAM-R



AYRTON
Digital Lighting

WILDBEAM-R AUTOMATED LUMINAIRES

WILDBEAM™R, along with MAGICRING™R1, is the smallest luminaire in the RADICAL™ range. Highly compact, lightweight, super-fast and powerful, WILDBEAM™R is fitted with seven 15 Watt Osram Ostar RGBW LED sources, each paired with high yield 67 mm 4.5° collimated optics. Together these provide a 2,500 lumen shaft of light with a centre beam intensity of 262,500 candela. With a power consumption of only 130 Watt and a record-breaking 90% efficiency, this makes WILDBEAM™R the most efficient compact LED luminaire on the market. The distinctive arrangement of the optics and the individual control of each LED emitter affords numerous graphic effects. A multitude of dynamic, aerial colour effects can be created and the beam animated around a central point, while the crisp delineation of each component beam remains perfectly distinct.



An internal library of pre-programmed effects and colours is accessible through dedicated DMX channels for rapid use of the luminaire when programming time is limited.

For close-up applications, or if a wider beam is required, an optional holographic filter can be installed easily behind the front face.

WILDBEAM™R is equipped with new generation three-phase stepper motors that allow the quick and precise movement essential for WILDBEAM™R's performance. These extremely compact new motors fit perfectly into the minimalist design of the luminaire.





OPTICS

- Beam aperture: 4,5°
- 85% optic efficiency
- High-efficiency 67 mm PMMA optics

LIGHT SOURCE

- 7 multi-chip 15 Watt LED sources
- Light output: up to 2,500 lumen
- Luminous intensity: 262,500 cd
- Rated sources life: up to 50,000 hours
- Flicker free sources management, suitable for TV applications and all video recorded events

MOVEMENT

- Extremely accurate positioning
- Moving-head operated via either 8 or 16 bit resolution
- High-resolution stepper motors operated via microprocessors ensure extreme accuracy and smooth movements.
- PAN and TILT automatic repositioning
- Moving-head range: 540° (PAN), 270° (TILT)

COLOURS

- Sophisticated 4 colours RGBW mixed, reaching high Colour Rendering Index
- Uniform light beam with no colour shadows, and rich saturated and pastel colour-hues
- 4.29 billion colours (8 bit resolution)
- Virtual colour wheel, including most usuals white colour temperature presets
- Dynamic colour macro effect with variable speed

DIMMER / STROBE

- Electronic dimmer, allowing perfect light adjustment from 0 to 100% without colour variation
- White or colour strobe effect, with speed adjustment from 1 to 25 flashes per second

SOFTWARE FACILITIES

- Local DMX addressing of the luminaire and its optional parameters through its built-in LCD panel control
- Remote DMX addressing of the luminaire and its optional parameters through a standard RDM DMX controller
- Built-in pattern effects with speed and fade controls for scenic applications
- Information menu including hour counter, temperature, software version

HARDWARE FACILITIES

- Graphic LCD display for addressing and special functions settings, with flip function
- 6 menu buttons to set the functions
- Over temperature protection
- XLR 5 pin male and female connectors for DMX connection
- PowerCON TRUE1 male and female connectors for power connection

CONTROL

- DMX 512 protocol, through DMX cable
- DMX-RDM compatible
- Stand-alone mode and Master/Slave modes
- Local control panel, with LCD display
- Choice of 3 DMX modes (from 16 to 42 DMX channels)

POWER SUPPLY

- Electronic supply with active PFC
- 110 to 240 Volts - 50/60Hz
- Power 130 Watt max

COOLING SYSTEM

- Advanced cooling system
- Self adjusting variable speed fans for quiet operation (Auto mode)
- Selectable auto, stage & studio ventilation modes
- Safety protection against temperatures excesses

HOUSING

- Moving-head skeleton made of aluminium and steel metal plates
- Heatsinks in aluminium, satin finish
- Moulded covers in self-extinguishing fire retardant ABS PC (V0 class)
- Two sides handles for transportation
- IP20 protection rating
- Exterior finish: black (Carbon)

INSTALLATION

- Fastening brackets system: one Omega ¼ turn brackets designed for use with standard clamps
- Mounting points: two ¼ turn locking fittings allowing installation of Omega bracket on luminaire
- Safety cable attachment point

OPERATING PARAMETERS

- Operating positions: all (device on floor or fixed to a support)
- Maximum permitted ambient temperature (Ta max): 45°C (113°F)
- Minimum permitted ambient temperature (Ta min): -10°C (14°F)
- Minimum usage distance: 0.2 m (8 inches)

COMPLIANCE

EU (EMC)

- EN 55015 (2006) - EN 55015 A2 (2009)
- EN 61547 (2009) - EN 61000-3-2 (2006)
- EN 61000-3-2 A2 (2009) - EN 61000-3-3 (2008)

EU (LVD)

- EN 60598-1 (2008) - EN 60598-2-17 (1989)
- EN 60598-2-17 A2 (1991)

SIZE

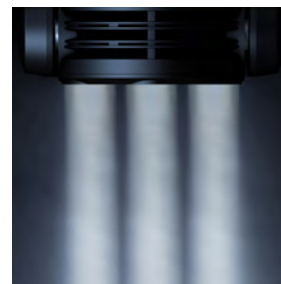
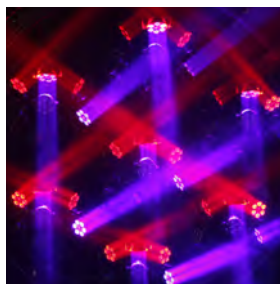
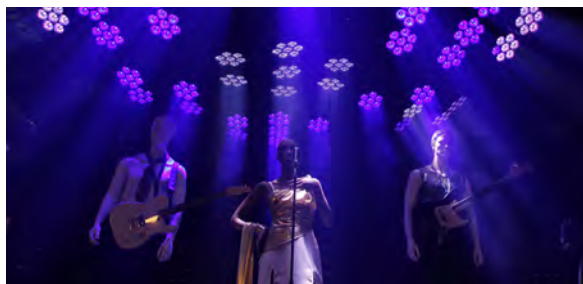
- Product: 288 x 379 x 220 mm (l x h x d)
- Flight-case foam: 350 x 410 x 280 mm (l x h x d)

WEIGHT

- Product: 8.7 KG

PRODUCT CODES

- 013150: WILDBEAM-R AUTOMATED LUMINAIRE





AYRTON

Digital Lighting

www.ayrton.eu